

iParFect 150™ FWQ RGBA

The all-new iParFect 150 FWQ RGBA features an exceptionally-wide zoom range and silent operation with passive cooling, making it ideal for theatres, concert halls and television. With an IP 65 rating, it is also perfect for any outdoor application.

**Light source**

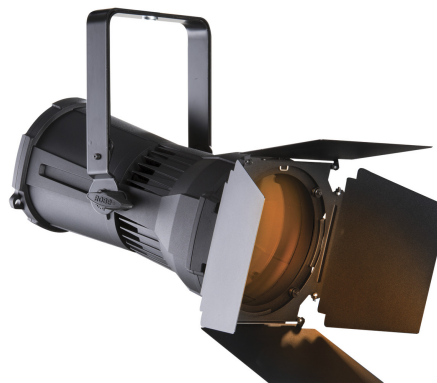
7x 40W RGBA multichips

**Light output**

1.650 lm, 5.300 lx @ 5 m

**Zoom range**

3,8° - 60°



The RGBA LED colour combination provides a high CRI and allows designers to produce warm, rich, amber tones that are normally difficult to achieve. Other features include smooth CMY & RGBA colour control, 18-bit dimming and Tungsten emulation, with both selectable & variable colour temperatures providing total output control.

The powerful, punchy beam with a zoom range of 3,8° to 60°, combined with a Fresnel style beam edge, results in a smooth, homogenised beam of light. This compact, lightweight fixture includes a combined hanging / floor stand bracket and accessories such as gel frame and barndoors.

Now equipped with Robe's innovative lens coating technology which brings benefits such as bright and clear lenses, no scratches or marks, higher light output and longer intervals between cleaning.

Technical Specification

Source

- Light source type: 7x 40W RGBA multichips
- LED life expectancy: min. 50.000 hours
- Typical lumen maintenance: L70/B50 @ 50.000 hours
- Light source type: 7x 40W RGBA multichips
- LED life expectancy: min. 50.000 hours
- Typical lumen maintenance: L70/B50 @ 50.000 hours

Optical system

- Robe's proprietary optical design
- High-efficiency zoom optical system, ratio 15,5:1
- Zoom range: 3.8° - 60°
- Robe's proprietary optical design
- High-efficiency zoom optical system, ratio 15,5:1
- Zoom range: 3.8° - 60°

Dynamic Effects and Features

- Colour mixing mode RGBA or CMY
- Variable CTO: 2.700K - 8.000K
- Virtual Colour Wheel: with 66 preset swatches
- Colour mixing mode RGBA or CMY
- Variable CTO: 2.700K - 8.000K
- Virtual Colour Wheel: with 66 preset swatches

Control and programming

- Setting & Addressing: two-row LCD display & 4 control buttons, stand-alone operation with 3 editable programs (each up to 25 steps)
- Protocols: USITT DMX-512, RDM
- Wireless CRMX™ technology from Lumen Radio - on request
- Setting & Addressing: two-row LCD display & 4 control buttons, stand-alone operation with 3 editable programs (each up to 25 steps)
- Protocols: USITT DMX-512, RDM
- Wireless CRMX™ technology from Lumen Radio - on request

Thermal specification

- Maximum ambient temperature: 40°C (104°F)
- Maximum surface temperature: 80°C (176°F)
- Minimum operating temperature: -10°C (14°F)
- Maximum ambient temperature: 40°C (104°F)
- Maximum surface temperature: 80°C (176°F)
- Minimum operating temperature: -10°C (14°F)

Electrical specification and connections

- Power supply: Electronic auto-ranging
- Input voltage range: 100-277 V, 50/60 Hz
- Power consumption: Max. 220 W
- Power supply: Electronic auto-ranging
- Input voltage range: 100-277 V, 50/60 Hz
- Power consumption: Max. 220 W

Approvals

- CE Compliant
- cETLus Compliant
- CE Compliant
- cETLus Compliant

Mechanical specification

- Height: 234.7 mm (9.24")
- Width: 251 mm (9.88")
- Depth: 413 mm (16.26")without hanging bracket / 489.4 mm (19.27") with hanging bracket
- Height: 234.7 mm (9.24")
- Width: 251 mm (9.88")
- Depth: 413 mm (16.26")without hanging bracket / 489.4 mm (19.27") with hanging bracket

Rigging

- Mounting horizontally or vertically via mounting yoke
- Universal operating position
- Safety cable attachment point
- Mounting horizontally or vertically via mounting yoke
- Universal operating position
- Safety cable attachment point

Included items

- User Manual
- User Manual

Optional accessories

- Gel frame: 10980372
- Barndoor module: 10980349
- Outdoor barndoor module: 10980884
- Gel frame: 10980372
- Barndoor module: 10980349
- Outdoor barndoor module: 10980884

Legal

- iParFect 150™ is a Trademark of Robe lighting s. r. o.
- iParFect 150™ FWQ RGBA is patented by Robe lighting s. r. o. and is protected by one or more pending or issued patents
- iParFect 150™ is a Trademark of Robe lighting s. r. o.
- iParFect 150™ FWQ RGBA is patented by Robe lighting s. r. o. and is protected by one or more pending or issued patents