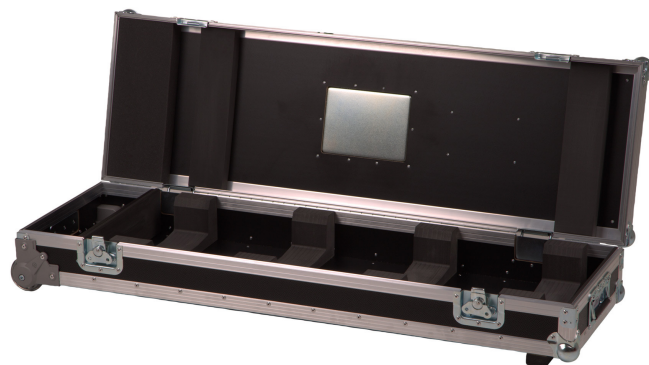


Single Top Loader Case Tetra2™

This case provides perfect protection for Tetra2™ in the touring and rental market. It is constructed from high-quality, water repellent 9 mm thick plywood. It has a black finish exterior and features aluminium protected edges and tough steel corners. This single case is equipped with four metal recessed wheels for easy transport.



Technical Specification

Exterior dimensions

- 1220 x 390 x 250 mm (48.0" x 15.4" x 9.8")
- 1220 x 390 x 250 mm (48.0" x 15.4" x 9.8")